

# PAM<sup>®</sup> SURVEY SCORING: GROUP/SUB-GROUP STRUCTURES

A key feature of the PAM<sup>®</sup> Survey Scoring Administration is the ability to build group and sub-group structures based on the programmes, organisations, cohorts and other divisions you may desire. Patients can be conveniently placed into an organised structure as the programmes become active.

## Group/Sub-group Features

**Reporting** – Each included report features the ability to report by your Group and/or Sub-group. This will make isolating or comparing across programmes, organisations, etc. an easy task.

**Access** – The Group and Sub-group structure helps to create access limitations if desired. Roles can be assigned access to specific or all Group(s)/Sub-group(s).

**Working with vendors** – Vendors can be assigned (a) Group(s) and/or Sub-group(s) for electronic submissions.

**Provisioned surveys** – Each group can be provisioned a different set of survey types. For example, Group 1 has access to PAM 10, Group 2 has access to PAM 13 and Group 3 has access to PAM 10 and PAM 13.

## Considerations for Group Structures

- Forethought is important when developing your Group/Sub-group structure. The structure should represent your organisations and/or programmes today as well as be scalable for the future.
- While they can be moved, to correctly represent reporting, patients can be assigned to one Group/Sub-group at a time.
- Editing Groups/Sub-groups could require patients to be re-assigned.

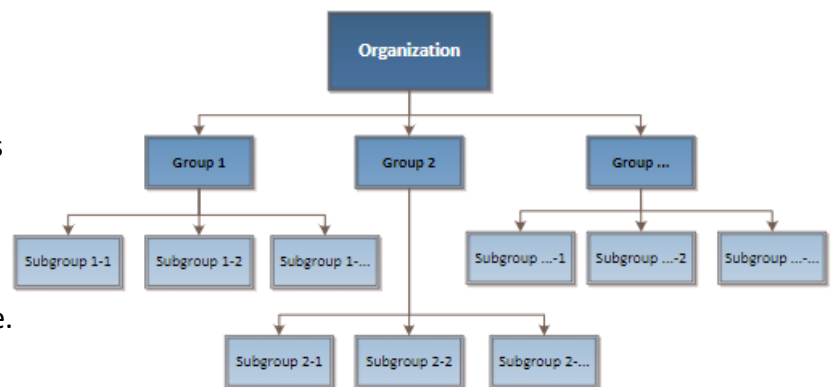
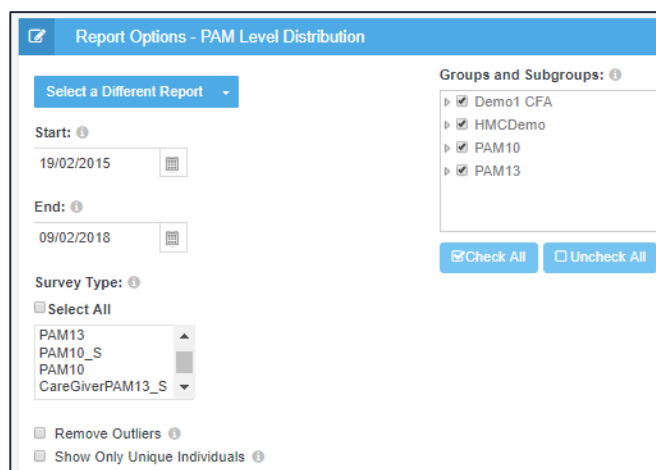


Figure 1. Organizational Structure



The screenshot shows the 'Report Options - PAM Level Distribution' interface. It includes a 'Select a Different Report' dropdown, 'Start' and 'End' date pickers (19/02/2015 to 09/02/2018), a 'Survey Type' dropdown with options like PAM13, PAM10\_S, PAM10, and CareGiverPAM13\_S. On the right, a 'Groups and Subgroups' list shows 'Demo1 CFA', 'HMCDemo', 'PAM10', and 'PAM13' with checkboxes. There are also 'Check All' and 'Uncheck All' buttons.

- Two roles, Group Administrator and Coach, can be assigned to specific Group(s) and/or Sub-group(s).
- Group Administrators manage the reports and coach enrollment as well as view patients within their assigned Group(s) and Sub-group(s).
- Coaches can view patients and reports (optional authority) within their assigned Group(s) and Sub-group(s).